

crafton tull

ABOUT US



WHO WE ARE

Crafton Tull is a fully-integrated design firm providing architecture, interior design, mechanical engineering, electrical engineering, plumbing design, civil engineering, structural engineering, survey, planning, and landscape architecture. Since our inception in 1963, we have grown to a company of more than 240 professionals in six offices throughout Arkansas and Oklahoma.

We are a client-focused company, and naturally, we want to begin our customer service by servicing your needs. Every project is different and must be tailored before we can design the building and spaces that are best suited to your needs. We have to understand your goals. We want to know what you think is the right fit. It is our intent to staff any project you may award us with the best staff for the project and together, we would determine the appropriate roles based upon the needs and scope on a project by project basis.



HOW WE OPERATE

Our structure is a framework for the creative process to utilize the collective skills and talents of our professionals to create outstanding solution and designs that serve our clients' needs. As a full-service, multidisciplinary firm, we are able to provide single-source accountability and seamless inter-disciplinary design coordination. When needed, our team expands to include specialty consultants who provide additional services, such as marketing and feasibility analysis, unique structural system design, and cost estimation. These consultants, drawn from across the nation, are chosen to specifically fit your individual needs.



We realize our business is not about us, it's about you - our client. We listen to your needs and desires and staff each project with a team of experienced professionals that can address them. Our staff relies heavily on collaboration and coordination to ensure your project progresses smoothly. Throughout the project, you are at the center of the production of our work.

SUSTAINABILITY

Every project has a unique shade of green – we'd like to help you find yours. Our goal is to advocate environmental responsibility in everything that we do. We are committed to design excellence. And it is for that reason that we consistently practice smart design, implementing sustainable design practices in every project we touch and enhancing the value of our clients' projects. Our aim is to reduce negative impacts on the environment, respect the Earth's limited material and energy resources, and improve building efficiency and performance without compromising the well-being of the occupants or the vision of our clients. Environmentally friendly facilities don't have to be budget-busters. Our team will work with your goals and cost constraints to achieve the highest level of sustainability possible.



As a testament to our environmental advocacy, Crafton Tull was ranked in the top 100 firms nationally based on percentage of LEED Accredited Professionals. We currently have more than 40 LEED Accredited Professionals and have at least one LEED AP in each design discipline we offer. Combine that with having LEED Registered and Certified projects of every level under our belts, and we have the confidence to produce informed, creative, sustainable solutions with each and every service we provide.

University of Arkansas for Medical Sciences

Structural, Mechanical and Electrical Engineering (1998 - current)

Civil Engineering (2009 - current)

Baptist Health System

Landscape Architecture (2009 - current)

University of Arkansas

Survey, Civil and Structural Engineering (2006 - current)

Mechanical and Electrical Engineering (2009 - current)

University of Central Arkansas

Civil Engineering (1989 - current)

Tulsa Technology Center

Civil, Structural, Mechanical and Electrical Engineering (2009 - current)

Arkansas Highway & Transportation Department

Civil Engineering (2004 - 2006)

Survey Services (2009 - current)

Tri-County Regional Water Distribution District

Civil Engineering (2009 - current)

Lindsey Management, Inc.

Civil Engineering (2006 - current)

Public Service Companies of Oklahoma

Survey and Civil Engineering (2006 - current)

Northwest Arkansas Community College

Civil, Structural, Mechanical, Electrical Engineering and Landscape Architecture (2007 - current)

Arkansas State University

Civil, Structural, Mechanical, Electrical Engineering and Landscape Architecture (2005)

Arkansas Tech University

Mechanical Engineering (1999 - 2004)

Arkansas Department of Human Services

Mechanical and Electrical Engineering (1996 - 2003)

Military Department of Arkansas

Survey, Civil, Structural, Mechanical and Electrical Engineering (2005 - 2009)

University of Central Arkansas – Conway, Arkansas

2011 – Bear Hall Residence & Sky Boxes

2010 – Beatrice Powell Intersection Improvements

2009 – Donaghey Avenue Parking Improvements

2009 – Bruce Street Parking Improvements

2008 – Business Building Civil Design

2008 – Alumni Plaza Survey & Civil Design

2007 – South Parking Lot at Physical Plant

2006 – Hughes Hall Parking Lot Reconstruction

2005 – Student’s Lane Intersection Improvements

2004 – Estes Stadium Parking Expansion

2004 – Robbins Lane Parking Improvements

2004 – Stadium Court Parking Improvements

2003 – Baseball Field Parking Improvements

2003 – Bridge Modifications at Stone Dam Creek

2002 – Western Avenue Parking Improvements

2002 – College Street Parking Lot

2001 – Drainage Improvements at Baseball Field

2000 – Parking Expansion at Softball Complex

University of Arkansas, Fayetteville, Arkansas

2010 – Science D Labs Renovation

2010 – Walton Hall Renovation

2010 – Darby Hall Renovation

2009 – Bud Walton Hall Assessment and Spatial Optimization Study

1996 – Topographic Survey for Student Union and Parking Deck

1995 – Various Surveys across campus

1995 – Sidewalk Topography Survey 1985 – Hydraulics lab

1993 – Topographic Survey for Hill Hall and Mullins Library

1990 – Pottery Department

1990 – Soil Diagnostics lab, Agricultural experiment station

1987 – Parking lot improvements

Northwest Arkansas Community College – Bentonville, Arkansas

1998 – Street Design for the Entrance to College

landscape master plan

BENTONVILLE, ARKANSAS

northwest arkansas community college



Crafton Tull was commissioned to prepare a landscape master plan for the NorthWest Arkansas Community College. The plan considered goals established as part of the campus master plan, completed in 2005.

Priorities of the master plan include defining campus edges, establishing focal points, creating outdoor gathering spaces, emphasizing campus entries and wayfinding, and creating spaces to encourage students to remain on campus between classes to reinforce a collegiate atmosphere. Several of these priorities were addressed through the repetition of design elements (such as circular drives, fountains, and linear axes) and the establishment of a materials palette to denote various campus elements through the use of paving, lighting, water, signage, and plant materials.

The plan maintains the formal integrity of a college campus through the design and materials selection, while also creating informal areas with a more “park like” setting, as desired by college staff and board members. One of these informal areas occurs at the primary entrance, where two detention areas have been redesigned as permanent retention ponds with landscape, trees, and sitting areas surrounding them. A second informal area was reinforced in mature tree grove and grassland areas with the creation of an interpretive trail and raised boardwalk.

The master plan report also includes a comprehensive materials palette, as well as maintenance and irrigation installation and maintenance guidelines.

SERVICES

Planning
Landscape Architecture

FEE

\$65,000

COMPLETION

March 2006



northwest arkansas community college

bogle plaza

BENTONVILLE, ARKANSAS

Crafton Tull was commissioned by NorthWest Arkansas Community College to provide landscape architecture services for spaces surrounding the new student center. These spaces included two drop-off areas, Bogle Plaza, and one terminus of the future quadrangle. Our services included design and construction documentation for landscape, hardscape, lighting, site furnishings, and irrigation. The fountain was designed to withstand the windy conditions on campus

SERVICES

Planning
Landscape Architecture

CONSTRUCTION BUDGET

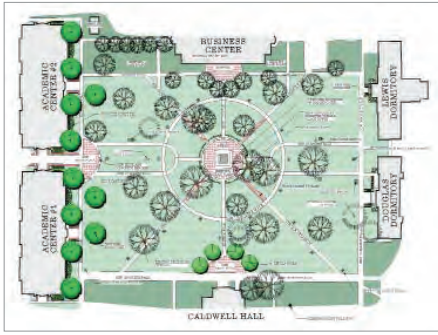
\$300,000

SIZE

1 acre

COMPLETION

September 2006



quadrangle

PINE BLUFF, ARKANSAS

university of arkansas at pine bluff

Crafton Tull performed for landscape, irrigation design, site lighting layout and consultation on hardscape design and signage design for the Quadrangle at the University of Arkansas at Pine Bluff.

The challenges of the Quadrangle design were two fold. How to accommodate student foot traffic across the space while preserving the 100-year old oak trees that were the heart of the campus led to creative solutions for both.

The addition of a circular walk around the clock tower plaza provided paved access without invasive construction to the root systems of the mature trees. Brick paths on sand were used as diagonal paving solutions under the large oaks. Ornamental lighting was designed to accentuate the clock tower as well as provide illumination for student safety at night.

SERVICES

Planning
Landscape Architecture

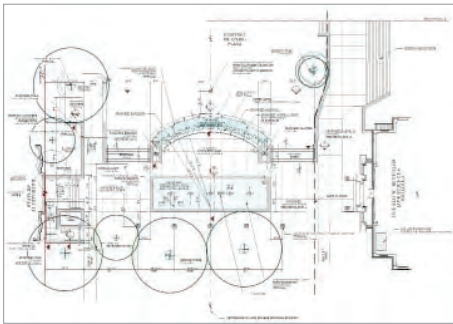
CONSTRUCTION BUDGET

\$500,000

COMPLETION

August 2002





plaza fountains

CONWAY, ARKANSAS

hendrix college

Crafton Tull was chosen to produce construction documents for plaza spaces he created adjacent to a new laboratory facility in the center of the Hendrix College campus. Our firm directed the details, layout, and construction administration for two fountains, paving, area lighting, landscape, and irrigation.

An existing reflecting pool was reconstructed to straddle a central axis between the new Life Science Building and the existing auditorium. This raised fountain with spray jets also acts as a seat wall for auditorium overflow when the plaza is in full use. This new layout allowed for a second fountain, with boulders used to create a cascade effect, to help transition the plaza grades to a less formal open space courtyard below.

Our firm coordinated with the fountain technicians as well as the contractors during construction of the plaza fountains. Project punch-out inspections were also performed upon completion of the hardscape and fountain work.

SERVICES

Landscape Architecture

FEE

\$17,750

COMPLETION

Spring 2001

dave roberts

ASLA

director of planning

REGISTERED LANDSCAPE ARCHITECT

Arkansas #198

EXPERIENCE

22 Years

EDUCATION

University of Arkansas Fay Jones School of
Architecture
Bachelor of Landscape Architecture

PROFESSIONAL AFFILIATIONS

American Society of Landscape Architects
Arkansas Chapter, Past Executive Committee
Member and Past Chapter President

American Planning Association Member

Arkansas State Board of Landscape
Architects, Past Member

University of Arkansas Fay School of
Architecture Past Advisory Board Member

UALR Urban Studies, Past Adjunct Professor

Little Rock City Beautiful Commission - Past

PUBLICATIONS

City & Town – Arkansas Municipal League
Publication: September 2009 Vol. 65, No.9

Parks Teach Green Lessons (Sustainable park
design article)

City & Town – Arkansas Municipal League
Publication: October 2010 Vol. 65, No.10

Turn Obstacles Into Amenities (Community open
space design article)

City & Town – Arkansas Municipal League
Publication: December 2011 Vol. 67, No.12

Integrate Green with the Grid

Philander Smith College Landscape Master Plan – Little Rock, Arkansas

Central Baptist College Landscape Master Plan – Conway, Arkansas

NorthWest Arkansas Community College Landscape Master Plan – Bentonville, Arkansas

Hendrix College Campus Fountains and Student Life & Technology Center – Conway, Arkansas

University of Central Arkansas President's House Plaza – Conway, Arkansas

University of Arkansas at Little Rock Business Building – Little Rock, Arkansas

University of Arkansas for Medical Science College of Public Health – Little Rock, Arkansas

University of Arkansas Vol Walker Addition – Fayetteville, Arkansas

University of Arkansas at Pine Bluff: Quadrangle Pine Bluff, Arkansas

Arkansas State University Mountain Home – Mountain Home, Arkansas

Ouachita Baptist University – Arkadelphia, Arkansas

Abilene Christian University Athletic Village – Abilene, Texas

Owasso Complex for Tulsa Tech – Owasso, Oklahoma

Northeastern State University - Tahlequah, OK

Arkansas School for Math, Science and the Arts – Hot Springs, Arkansas

Episcopal Collegiate School - Little Rock, Arkansas

Mountain Valley Retreat Center – Hot Springs, Arkansas

Hewlett-Packard Data Support Center Campus – Conway, Arkansas

Beaver Water District Administration Building – Lowell, Arkansas

SPEAKING ENGAGEMENTS

American Indian Preservation Services Conference – Norman, OK

Arkansas Recreation & Parks Association Conference – Paragould, AR

Community Design Institute session – Conway, AR

Arkansas Associate of Facility Administrators – Morrilton, AR

Arkansas Municipal League sessions – Hot Springs, AR

Community Development Institute class – Conway, AR

steven beam

PE, LEED AP

REGISTRATION

Arkansas # 12711

EXPERIENCE

7 Years

EDUCATION

University of Arkansas
Bachelor of Science - Civil Engineering
Masters of Science - Civil Engineering
John Brown University
Masters of Business Administration

PROFESSIONAL AFFILIATIONS

American Society of Civil Engineers - UofA
Student Chapter Practitioner Advisor
Arkansas Alumni Association
Civil Engineering Society Past President and
Board Member
Chi Epsilon, Civil Engineering Honor Fraternity
National Society of Professional Engineers,
Northwest Arkansas Chapter President
Tau Beta Pi, Engineering Honor Fraternity
U.S. Green Building Council

vice - president infrastructure

Project list

Circle of Life Hospice - Springdale, Arkansas
Regions Financial Center - Fayetteville, Arkansas
Bank of Rogers, Pinnacle Branch Bank - Bentonville, Arkansas
Crye-Leike Realty Center - Rogers, Arkansas
University of Arkansas, Science D Infrastructure System Upgrade, Fayetteville, Arkansas
Tucker Elementary - Lowell, Arkansas
Commerce Park - Lowell, Arkansas
Dixieland Road, Laurel to Pleasant Grove - Rogers, Arkansas
Chaffee Crossing Redevelopment Plan Update - Fort Smith and Barling, Arkansas
Blossom Way Trail - Rogers, Arkansas
City of Rogers Sports Park - Rogers, Arkansas
City of Rogers Aquatics Center - Rogers, Arkansas
Village at Shiloh Road - Fayetteville, Arkansas
Champion Club Condos - Fayetteville, Arkansas
Shadow Valley Subdivision - Rogers, Arkansas
The Links at Stillwater - Stillwater, Oklahoma
Chapel Ridge Apartments - Sherwood, Arkansas
Phoenix Village Redevelopment - Fort Smith, Arkansas
Village at Centre Pointe - Rogers, Arkansas